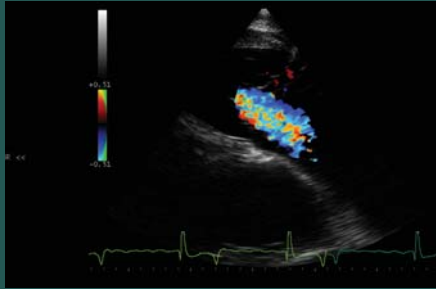


## Cardiac assessment

Measurements of heart rate and ECG are routinely performed during exercise in all poor performance cases. This can be done on the treadmill or during ridden exercise. Although cardiac causes of poor performance are less common than respiratory disorders we now think paroxysmal atrial fibrillation occurs more commonly than previously suspected.

Additional investigations offered include echocardiography, 24hr ECG monitoring and treatment of arrhythmias.



## Additional services

In addition to the Sports Medicine Service, the hospital has a fully equipped orthopaedic and surgical suite with specialists in diagnostic imaging, equine surgery and in anaesthesia, thereby providing a comprehensive equine clinical service.

## Recent relevant publications

In addition to our clinical work we are actively involved in clinical research to understand better the causes of poor performance and how best to treat and or prevent them. Below are some of our recent publications:

Franklin S.H., Burn J. and Allen K.J (2008) **Clinical trials using a telemetric endoscope for use during over-ground exercise: A preliminary study.** *Equine Veterinary Journal. In press*

Franklin S.H., Brazil T.J. and Allen K.J (2008) **Poor performance associated with equine gastric ulceration syndrome in four Thoroughbred racehorses.** *Equine veterinary education.* 20, 119-124.

Franklin S.H. (2008) **Dynamic collapse of the upper respiratory tract: A review.** *Equine Veterinary Education.* 20, 212-224

Allen K.J. and Franklin S.H. (2007) **RAO and IAD: Respiratory disease in horses revisited.** *In Practice* 29, 76-82.

Allen K.J., Lane J.G., Woodford N.S. and Franklin S.H. (2007) **Severe collapse of the rostral soft palate as a source of abnormal respiratory noise in six ponies and horses.** *Equine Veterinary Journal.* 39,562-6.

Lane J.G., Bladon B., Little D.R., Naylor J.R. and Franklin S.H. (2006) **Dynamic obstructions of the equine upper respiratory tract: Parts 1 & 2.** *Equine Veterinary Journal.* 38, 393-407.

Franklin S.H., Naylor J.R. and Lane J.G. (2006) **Videoendoscopic evaluation of the upper respiratory tract in 93 sport horses during exercise testing on a high-speed treadmill.** *Equine Veterinary Journal Supplement.* 36, 540-5.

Allen K.J., Tremaine W.H. and Franklin S.H. (2006) **Prevalence of inflammatory airway disease in national hunt horses referred for investigation of poor athletic performance.** *Equine Veterinary Journal Supplement.* 36, 529-34.



# Investigation of Poor Performance

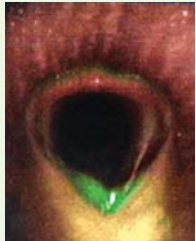
# Investigation of Poor Performance

Our mission is to provide **cutting-edge diagnostic techniques and expertise** in all aspects of the performance investigation.

**The Equine Sports Medicine Centre** at the Langford campus of the **University of Bristol** is the leading centre of its kind in the UK and is recognised world wide as a centre of excellence for the investigation of poor athletic performance. The centre is run by a dedicated team of experienced clinicians and support staff.

The service we provide offers a complete and comprehensive investigation into all aspects of poor performance.

## Upper airway assessment



There are many forms of dynamic airway obstruction. In order to make a definitive diagnosis it is necessary to perform endoscopy during exercise.

Treadmill endoscopy has been the 'gold-standard' method for the past 20 years. We have performed over 1000 treadmill examinations with a very high safety record. During this procedure we can simultaneously record respiratory sounds and measure respiratory parameters, which enable us to quantify how much the observed obstruction is affecting airflow and hence performance.



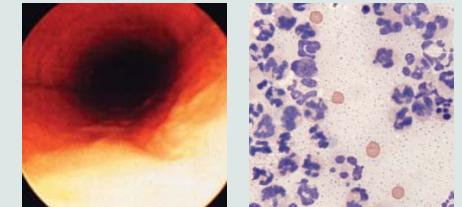
## Exciting new development

Over the last four years, we have been working with engineers to develop a telemetric endoscopy system which can be used in the field. Development of this system has been possible due to generous funding from the HBLB. We believe this system will have considerable benefits to equine welfare. We are currently able to examine horses in our indoor arena or on the gallops and aim that our system will soon be commercially available for other veterinary surgeons.



## Lower airway assessment

Many horses have lower airway disease that is not clinically evident. Tracheal wash and broncho-alveolar lavage are used routinely for diagnosis of inflammatory airway disease and exercise-induced pulmonary haemorrhage.



## Gastroscopy

A large proportion of poorly performing horses have severe gastric ulcers. We can offer gastroscopy at the hospital or can travel to the yard with our mobile unit.

